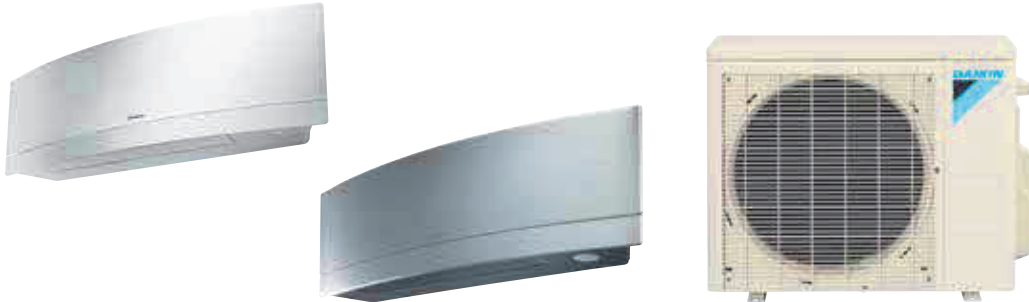


# Daikin EMURA

## Wall-Mounted Heat Pump

Up to 18 SEER | Up to 10 HSPF

SINGLE-ZONE SYSTEMS



Model	Indoor Unit		FTXR09TVJUW/S RX09RMVJU9		FTXR12TVJUW/S RX12RMVJU9		FTXR18TVJUW/S RX18RMVJU9	
	Outdoor Unit		Cooling	Heating	Cooling	Heating	Cooling	Heating
Capacity Rated (Min. - Max.)	Btu/h		9,000 (4,500 - 10,600)	10,000 (4,100 - 14,600)	12,000 (4,500 - 12,800)	13,500 (4,100 - 15,800)	18,000 (5,100 - 18,500)	20,000 (5,800 - 21,200)
COP Rated			4		3.58		3.34	
EER Rated			11				9.6	
SEER			18		17		14.5	
HSPF			9.3		10		9.8	
Piping Connections	Liquid	in. (mm)	Ø 1/4 (Ø 6.4)					
	Gas		Ø 3/8 (Ø 9.5)				Ø 1/2 (Ø 12.7)	
	Drain		Ø 11/16 (Ø 18.0)					
Max. Interunit Piping Length	ft (m)		65-5/8 (20)		49-1/4 (15)		98-1/2 (30)	
Max. Interunit Height Difference			49-1/4 (15)				65-5/8 (20)	
Chargeless			32-13/16 (10)					
Amount of Additional Charge of Refrigerant	oz/ft (g/m)		0.21 (20)					
Operating Range - Cooling	°F DB		50° - 115°F					
Operating Range - Low-Ambient Cooling*			14° - 115°F					
Operating Range - Cooling with Optional Air Adjustment Grille*			-4° - 115°F					
Operating Range - Heating†	°F WB		5° - 65°F					
Airflow Rate	Indoor Unit		FTXR09TVJUW/S		FTXR12TVJUW/S		FTXR18TVJUW/S	
	H	cfm (m³/min)	272 (7.7)	346 (9.8)	335 (9.5)	395 (11.2)	350 (9.9)	413 (11.7)
	M		208 (5.9)	258 (7.3)	219 (6.2)	290 (8.2)	275 (7.8)	332 (9.4)
	L		162 (4.6)	201 (5.7)	169 (4.8)	226 (6.4)	226 (6.4)	275 (7.8)
SL	134 (3.8)		117 (3.3)	131 (3.7)	131 (3.7)	208 (5.9)	208 (5.9)	
Fan	Speed	Steps	5 Steps, Quiet, Auto					
Air Direction Control			Right, Left, Horizontal, Downward					
Air Filter			Removable, Washable, Mildew Proof					
Dimensions (H x W x D)	in. (mm)		11-15/16 x 39-5/16 x 8-3/8 (303 x 998 x 212)				11-15/16 x 39-5/16 x 8-3/8 (303 x 998 x 212)	
Weight	Lbs (kg)		27 (12)				27 (12)	
Sound Pressure Level (H / M / L / SL)	dB(A)		38 / 32 / 25 / 19	41 / 34 / 28 / 19	45 / 34 / 26 / 20	45 / 37 / 29 / 20	46 / 40 / 35 / 30	47 / 41 / 35 / 30
Refrigerant	Outdoor Unit		RX09RMVJU9		RX12RMVJU9		RX18RMVJU9	
	Type		R-410A					
	Charge	Lbs (kg)	2.09 (0.95)				2.49 (1.13)	
Airflow Rate	H	cfm (m³/min)	985 (27.9)	1130 (32)	1,105 (31.3)	1,130 (32)	2,461 (69.7)	2,553 (72.3)
Dimensions (H x W x D)	in. (mm)		21-5/8 x 26-9/16 x 11-3/16 (550 x 675 x 284)				28-15/16 x 34-1/4 x 12-5/8 (735 x 870 x 320)	
Weight	Lbs (kg)		60 (27)		60 (27)		97 (44)	
Sound Pressure Level	H	dB(A)	46	50	49	51	54	55
ENERGY STAR® Certified			No		No		No	

\*Cutting a jumper or a dipswitch setting is required. Refer to installation manual.

Unit Combination		Power Supply				Compressor		OFM		IFM	
Indoor Unit	Outdoor Unit	Hz - Volts	Voltage Range		MCA	MOCP	RLA	W	FLA	W	FLA
FTXR09TVJUW/S	RX09RMVJU9	60 - 208	Min. 187 V Max. 253 V		9	15	7.5	39	0.13	29	0.13
		60 - 230									
FTXR12TVJUW/S	RX12RMVJU9	60 - 208	Min. 187 V Max. 253 V		9.1	15	7.5	39	0.13	29	0.19
		60 - 230									
FTXR18TVJUW/S	RX18RMVJU9	60 - 208	Min. 187 V Max. 253 V		12.8	15	10.75	110	0.38	29	0.21
		60 - 230									